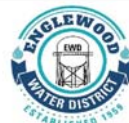


NOTES:

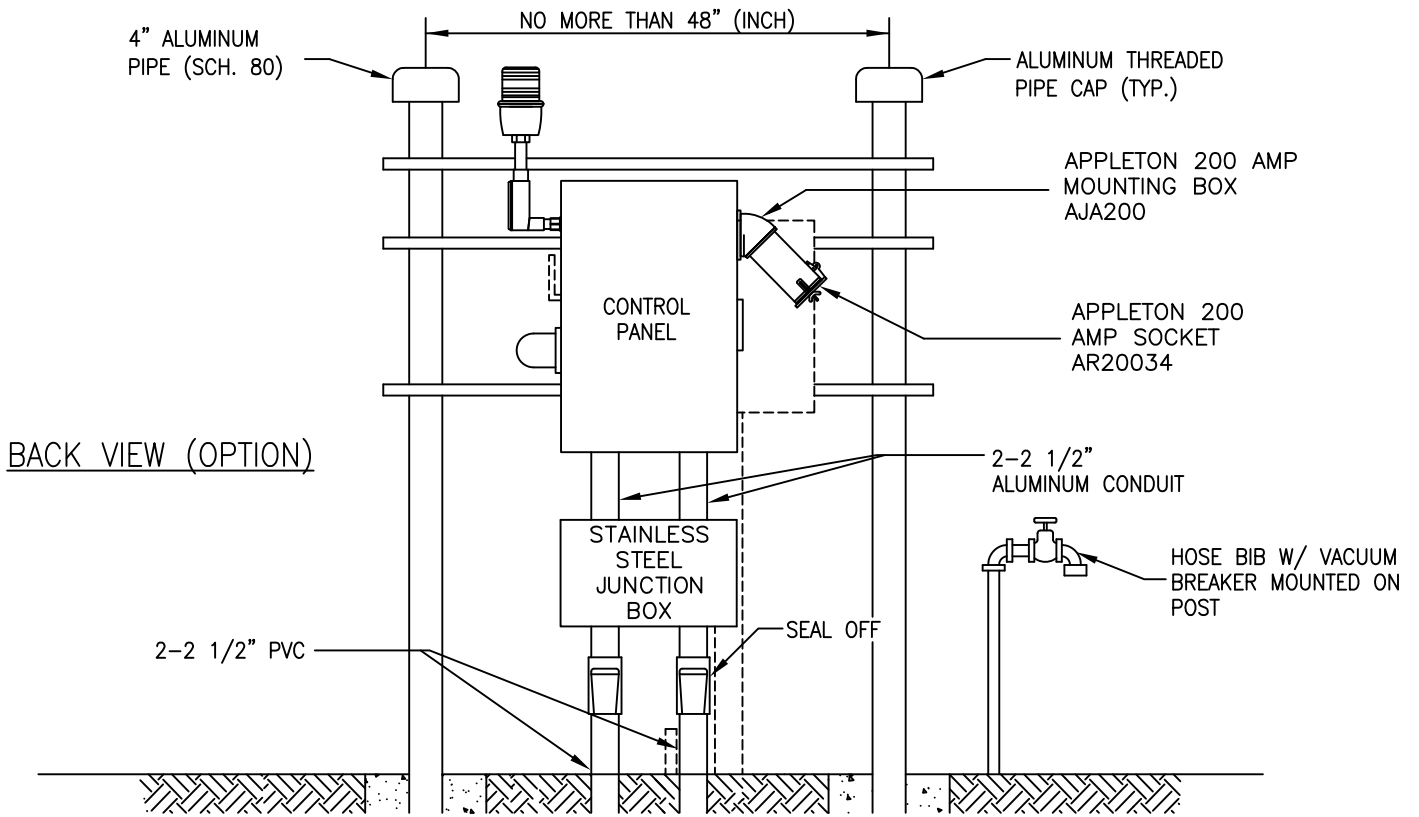
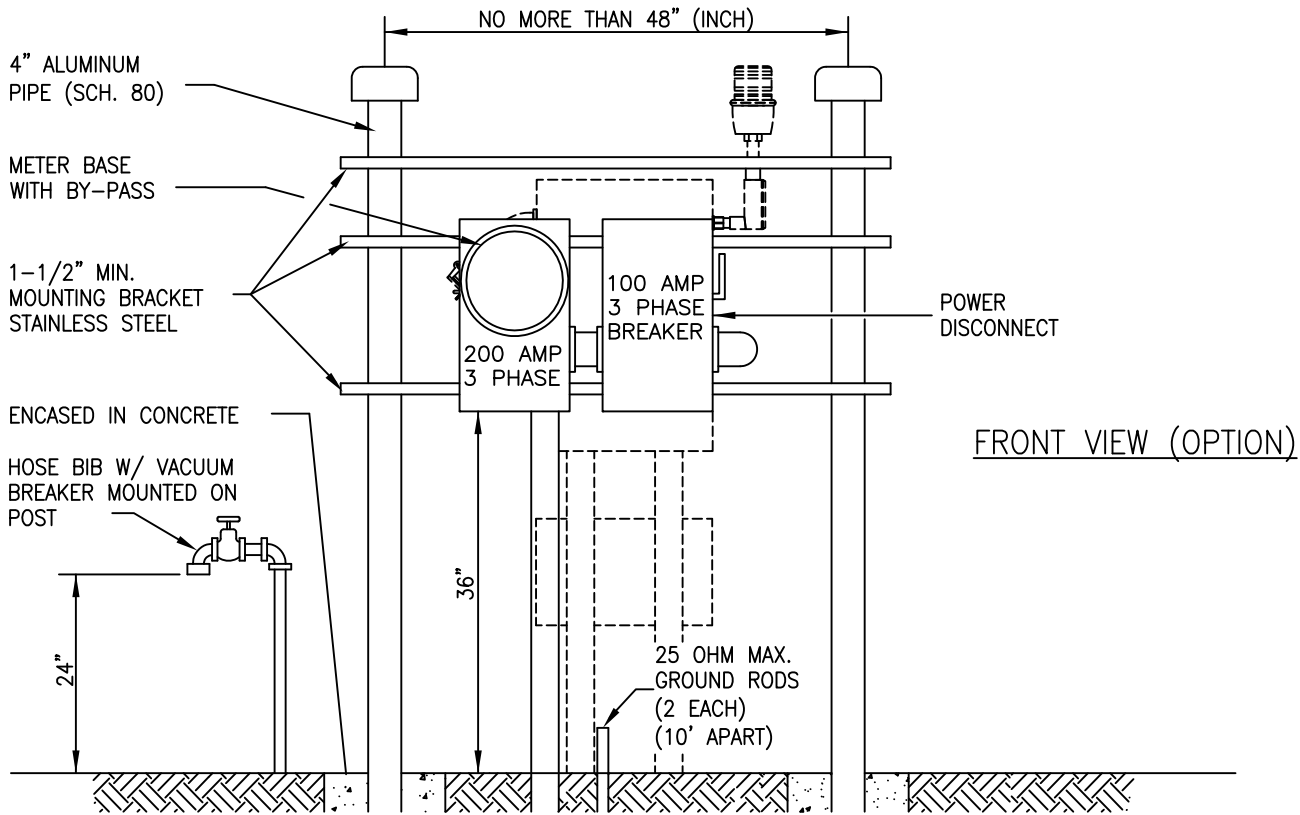
1. DRAWING IS SHOWN FOR 240 VOLT POWER SUPPLY. THE LOCATION OF METER AND MAIN POWER DISCONNECT AND CONTROL PANEL BY EWD ONLY!
2. POWER SUPPLY SHALL BE UNDERGROUND ON THE LIFT STATION SITE AND SHALL BE 3 PHASE FROM A 3 PHASE SOURCE ONLY.
3. NO WIRING SPLICES ARE ALLOWED WITH THE EXCEPTION OF THE JUNCTION BOX.
4. LIGHTNING ARRESTOR SHALL BE LOCATED AHEAD OF CONTROL PANEL (GE OR EQUAL).

LAST REVISION	JULY 2019
CHECKED	DW
APPROVED	KRL

PUMP STATION CONTROL
240 VOLT PANEL DETAIL



ENGLEWOOD WATER DISTRICT
201 SELMA AVENUE
ENGLEWOOD, FLORIDA 34223

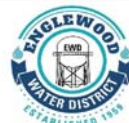


LAST REVISION JULY 2019

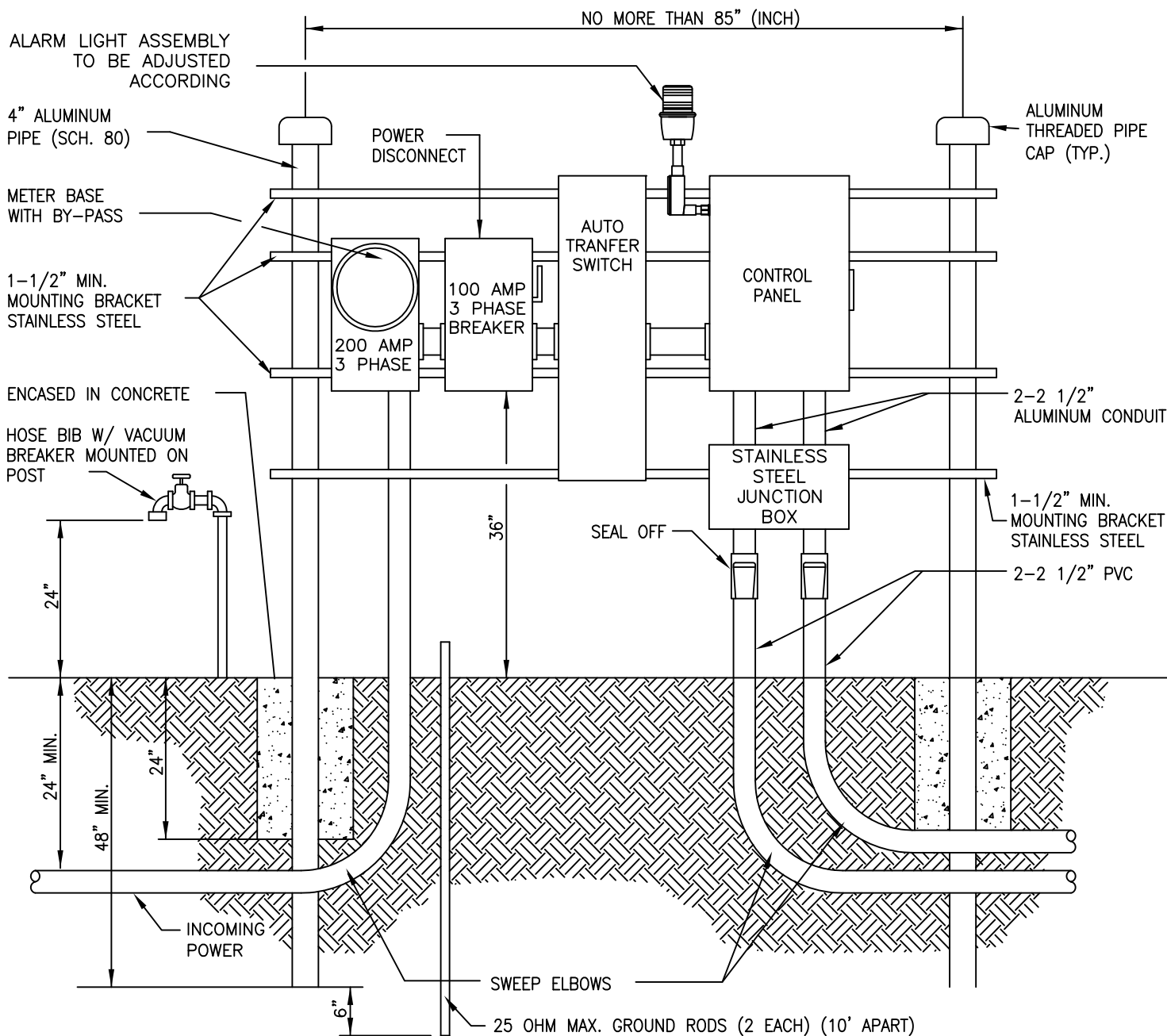
CHECKED DW

APPROVED KRL

PUMP STATION CONTROL
240 VOLT OPTION



ENGLEWOOD WATER DISTRICT
201 SELMA AVENUE
ENGLEWOOD, FLORIDA 34223



NOTES:

1. DRAWING IS SHOWN FOR 480 VOLT POWER SUPPLY. THE LOCATION OF METER AND MAIN POWER DISCONNECT AND CONTROL PANEL BY EWD ONLY!
2. POWER SUPPLY SHALL BE UNDERGROUND ON THE LIFT STATION SITE AND SHALL BE 3 PHASE FROM A 3 PHASE SOURCE ONLY.
3. NO WIRING SPLICES ARE ALLOWED WITH THE EXCEPTION OF THE JUNCTION BOX.
4. LIGHTNING ARRESTOR SHALL BE LOCATED AHEAD OF CONTROL PANEL (GE OR EQUAL).
5. ALL LIFT STATIONS 30 H.P. AND ABOVE SHALL BE EQUIPPED WITH ON-SITE GENERATOR.

LAST REVISION	JULY 2019
CHECKED	DW
APPROVED	KRL

**PUMP STATION CONTROL
480 VOLT PANEL DETAIL**



ENGLEWOOD WATER DISTRICT
201 SELMA AVENUE
ENGLEWOOD, FLORIDA 34223